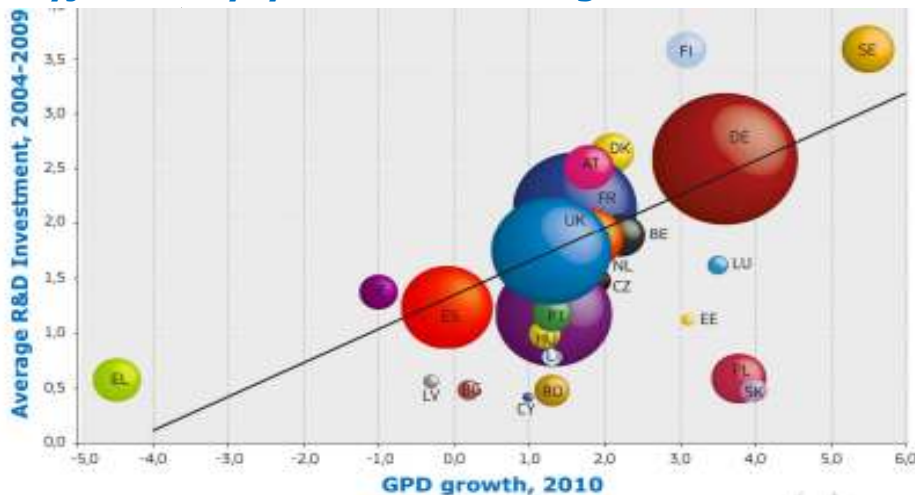




## Po co Horyzont 2020?

Inwestycja w R&D jako jeden ze sposobów na wyjście z kryzysu ekonomicznego.



## Co nowego?

- Silna integracja badań naukowych i **innowacji**
- Koncentracja na **wyzwaniach społecznych**
- Silne nastawienie na **MŚP**
- Znaczne **uproszczenie**

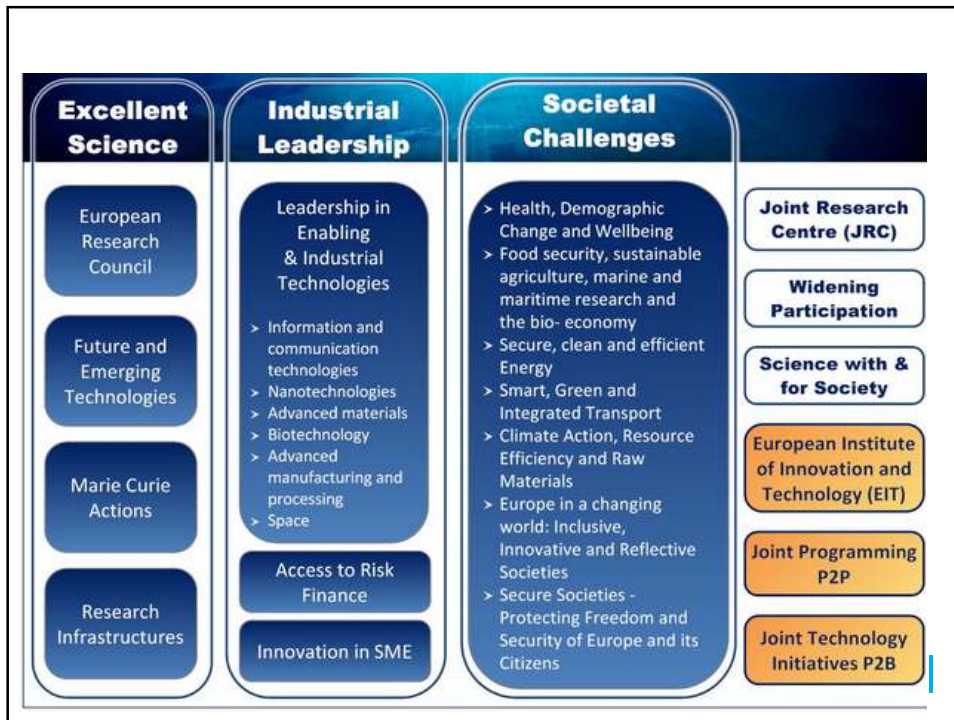


HORIZON 2020



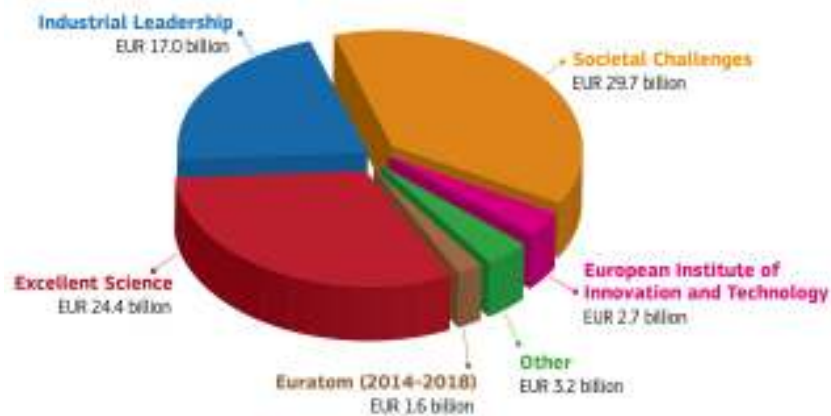
## Trzy priorytety





## 79 € mld (2014-2020)

HORIZON 2020 BUDGET (in current prices)



HORIZON 2020



## Silne nastawienie na MŚP

20% budżetu na wyzwania i technologie

Nowy instrument dla MŚP  
(>500 mln € 2014-15)

Działania pomocnicze  
("Innowacja w MŚP")

Dostęp do finansowania  
ryzyka

Eurostars ("public-public  
partnerships")



HORIZON 2020



## Znaczne uproszczenie (1)

- Jeden wspólny zbiór zasad uczestnictwa
- Proste, jednolite stopy refundacji
  - ✓ 1 project = 1 stopa (do 100%)
  - ✓ Koszty pośrednie: ryczałt 25%
- Uproszczenia w umowach



HORIZON 2020



## Znaczne uproszczenie (2)

### Mniej kontroli, audytów

- ✓ Większe ukierunkowanie

### Spójna implementacja

- ✓ Wyspecjalizowane agencje
- ✓ Wspólne systemy informatyczne

### Szybsze zawieranie umów

- ✓ 8 miesięcy od terminu zgłoszeń



HORIZON 2020



## Jednolite kryteria oceny



Wniosek oceniany "as is"

HORIZON 2020



## Nowy Participant Portal

- ✓ Jeden wspólny punkt obsługi
- ✓ Pełna elektronizacja obsługi grantu
- ✓ Nowe funkcje inteligentnego wyszukiwania



HORIZON 2020



## Nowości w programach pracy

- Dwuletnie programy pracy  
(2014-2015: >15 mld €)
- Mniejszy preskrytywizm
- Strategiczna orientacja



HORIZON 2020



## Plan prac i konkursy w 2014 r. (1)

**Doskonała baza naukowa: ~ 3 mld €**

European Research Council	4 calls	€ 1 662 m
Marie Skłodowska-Curie Actions	6 calls	€ 800 m
Future and Emerging Technologies (FET)	4 calls	€ 200 m
European Research Infrastructures (incl. e-Infrastructures)	4 calls	€ 277 m

HORIZON 2020



## Plan prac i konkursy w 2014 r. (2)

**Wiodąca pozycja w przemyśle: ~ 1,4 mld €**

ICT	2 calls	€ 700 m
Nanotechnologies, Advanced Materials, Biotechnology and Production	5 calls	€ 500 m
Space	5 calls	€ 128 m
Access to Risk Finance	2 calls	€ 5 m
Innovation in SMEs*	1 call	€ 10 m

\* Does not include €3 bn for SME instrument or Eurostars

+ € 300 m for Financial Instruments (not through calls)

HORIZON 2020



## Plan prac i konkursy w 2014 r. (3)

### Wyzwania społeczne :~ 2,8 mld €

Health, demographic change and wellbeing	2 calls	€ 600 m
Food Security, Sustainable Agriculture and Forestry, Marine and Maritime and Inland Water Research, Bioeconomy	3 calls	€ 300 m
Secure, clean and efficient energy	4 calls	€ 600 m
Smart, green and integrated transport	3 calls	€ 540 m
Climate action, environment, resource efficiency and raw materials	3 calls	€ 300 m
Europe in a changing world – inclusive, innovative and reflective societies	5 calls	€ 112 m
Secure Societies	4 calls	€ 200 m

HORIZON 2020



## Plan prac i konkursy w 2014 r. (3)

### Dodatkowo

Science with and for Society	4 calls	€ 45 m
Spreading Excellence and Widening Participation	3 calls	€ 50 m

HORIZON 2020





# Eksperci poszukiwani!

The screenshot shows the 'Experts' section of the European Commission's Participant Portal. The page features a blue header with the European Commission logo and the text 'RESEARCH & INNOVATION Participant Portal'. Below the header is a navigation menu with options like 'HOME', 'FUNDING OPPORTUNITIES', 'HOW TO PARTICIPATE', 'EXPERTS', and 'SUPPORT'. The main content area is divided into several sections: 'News' with a text update about H2020 expert calls, 'Experts' with a graphic of a brain and a text box inviting experts to join the database, 'New experts' with a sub-section 'Who can be an expert?' listing criteria like high-level expertise and availability for assignments, and 'What do expert assignments involve?' listing tasks like evaluation of proposals and monitoring of actions. A 'REGISTER AS EXPERT' button is visible at the bottom.

## Dalsze informacje

### • Participant Portal

<http://ec.europa.eu/research/participants/portal/desktop/en/home.html>

### • Research Enquiry Service

<http://ec.europa.eu/research/enquiries>

### • Zgłoszenia ekspertów

<http://ec.europa.eu/research/index.cfm?pg=newsalert&year=2013&na=na-221113>

### • Więcej o Horyzoncie 2020

<http://ec.europa.eu/horizon2020>

# Energia w Horyzoncie 2020



Katarzyna Sobótka-Demianowska

**Krajowy Punkt Kontaktowy  
Programów Badawczych UE**  
w Instytucie Podstawowych Problemów Techniki  
Polskiej Akademii Nauk

W niniejszej prezentacji wykorzystano materiały udostępnione m.in. przez KE i/lub Ministerstwa oraz Agencji RP



## Bezpieczna, czysta i efektywna energia

- ❖ **Podejście zorientowane na wyzwania (challenges)**  
- *Secure, clean and efficient energy*
- ❖ **Podejście przekrojowe**
- ❖ **Umiędzynarodowienie badań**
- ❖ **3 grupy tematyczne:**



## Energy work programme

### Zakres tematyczny

- ❖ **Efektywność energetyczna EE 1 – EE 14 (Energy efficiency call):**
  - ❖ **A. Budownictwo (Buildings and consumers)**
  - ❖ **B. Ogrzewanie i chłodzenie (Heating and cooling)**
  - ❖ **C. Przemysł i jego produkty (Industry and products)**
  - ❖ **D. Finanse dla zrównoważonej energii (Finance for sustainable energy)**

### ❖ Konkurencyjne technologie niskoemisyjne LCE 1-22 (Competitive low-carbon energy)

- ❖ Energia odnawialna, systemy grzewcze i chłodnicze
- ❖ Modernizacja Europejskiej sieci przesyłowej
- ❖ Nowoczesne systemy elektroenergetyczne wspierane przez technologie magazynowania energii
- ❖ Rozwój alternatywnych paliw i biopaliw transportowych
- ❖ Wspieranie zrównoważonego zużycia paliw kopalnych na drodze przejścia do gospodarki niskoemisyjnej
- ❖ Aspekty społeczne, środowiskowe i ekonomiczne działania systemów energetycznych

### ❖ Inteligentne miasta i społeczności (Smart Cities and Communities - SCC):

- ❖ SCC 1 – *Zintegrowane rozwiązania w zakresie energii, transportu, ICT dla Inteligentnego Miasta*
- ❖ SCC 2 – *Rozwój systemów zbierania danych*
- ❖ SCC 3 – *Stworzenie standardów dla SCC*
- ❖ SCC 4 – *Stworzenie sieci wsparcia w sektorze publicznym dla rozwiązań SCC*
- ❖ SCC 5 – *Inteligentne rozwiązania a konkurencja cenowa - wsparcie*

- ❖ **Pozostałe działania (Other Actions)**
- ❖ **MŚP i szybka ścieżka dla innowacji (SMEs and Fast Track to Innovation for Energy)**
  - ❖ SIE 1 – *Wspieranie innowacyjnego potencjału MŚP w zakresie niskoemisyjnych i efektywnych systemów energetycznych*
  - ❖ SIE 2 – *Szybka ścieżka dla innowacji - pilotaż*

**Pierwsze wezwanie do składania  
wniosków ogłoszone przez KE**




## Technology Readiness Levels

- TRL 0: Idea.** Unproven concept, no testing has been performed.
- TRL 1: Basic research.** Principles postulated and observed but no experimental proof available.
- TRL 2: Technology formulation.** Concept and application have been formulated.
- TRL 3: Applied research.** First laboratory tests completed; proof of concept.
- TRL 4: Small scale prototype** built in a laboratory environment ("ugly" prototype).
- TRL 5: Large scale prototype** tested in intended environment.
- TRL 6: Prototype system** tested in intended environment close to expected performance.
- TRL 7: Demonstration system** operating in operational environment at pre-commercial scale.
- TRL 8: First of a kind commercial system.** Manufacturing issues solved.
- TRL 9: Full commercial application,** technology available for consumers.

## Konkurs Energy Efficiency: Nabory


Topics*	2014	2015
EE1, EE3, EE18	20/03/2014	
EE4, EE5, EE7, EE8, EE9, EE10, EE11, EE12, EE13, EE14, EE15, EE16, EE19, EE20, EE21	05/06/2014	
EE2, EE18	09/12/2014	
EE5, EE6, EE7, EE9, EE10, EE11, EE13, EE14, EE15, EE16, EE17, EE19, EE20, EE21		10/06/2015



## Konkurs Smart cities & communities: Nabory

Topics*	2014		2015
SCC1	07/05/2014		
SCC2, SCC4	07/05/2014		
SCC1			03/03/2015
SCC3, SCC5			03/03/2015

www.kpk.gov.pl
29
Copyright © KPK PB UE IPPT PAN



## Konkurs Competitive low-carbon energy: Nabory

Topics*	2014		2015
LCE1, LCE2, LCE11, LCE15, LCE16	01/04/2014 (Stage 1)	23/09/2014 (Stage 2)	
LCE22	01/04/2014		
LCE4, LCE7, LCE8, LCE10, LCE14, LCE18	07/05/2014		
LCE1, LCE2, LCE11, LCE15, LCE17	03/09/2014 (Stage 1)		03/03/2015 (Stage 2)
LCE3, LCE12, LCE19, LCE20	10/09/2014		
LCE3, LCE12, LCE19, LCE21 LCE4, LCE5, LCE6, LCE9, LCE14			03/03/2015
LCE18			28/04/2015
LCE13			05/05/2015

\* Corresponds to the topic code in the work-programme

www.kpk.gov.pl
30
Copyright © KPK PB UE IPPT PAN



## Inne konkursy dla zagadnienia energii

- LEIT – KET materials, nano, electronics, manufacturing, processing
- FET-open and FET-pro-active
- Research Infrastructures
- ERC, EIT
- SME instrument (directly paid from Energy SC budget)
- JRC direct actions (IET, IPTS)

### Close links

- Transport (societal challenge)
- Agriculture, marine, bio-economy (societal challenge), including Blue growth (strategic focus area)
- Climate action, resource efficiency, raw materials (societal challenge)
- Secure societies (societal challenge)

KIC InnoEnergy



Leading Engine for Innovation and Entrepreneurship in Sustainable Energy

## KIC InnoEnergy Poland Plus





## WHO WE ARE?



The Leading Engine for Innovation and Entrepreneurship in Sustainable Energy

EU financed unit supporting Business Opportunities in Sustainable Energy



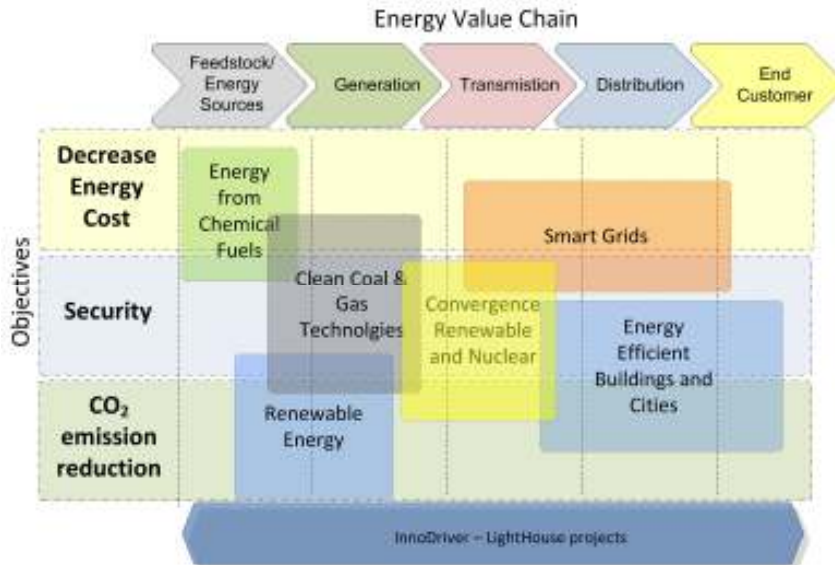
### KIC InnoEnergy

6 Co-location Centres – 6 Thematic areas



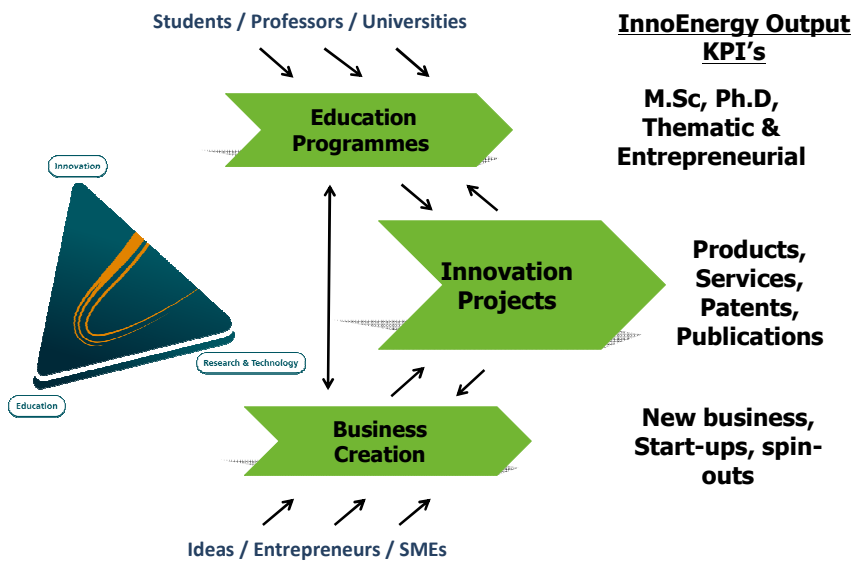
**Thematic areas mapping on energy value chain**

Strategic objectives



**KIC InnoEnergy uniqueness**

Integration of the Knowledge Triangle





# INNOVATION PROJECTS

## WHAT WE DO

- 1. Connecting Partners
- 2. Shape and support project execution



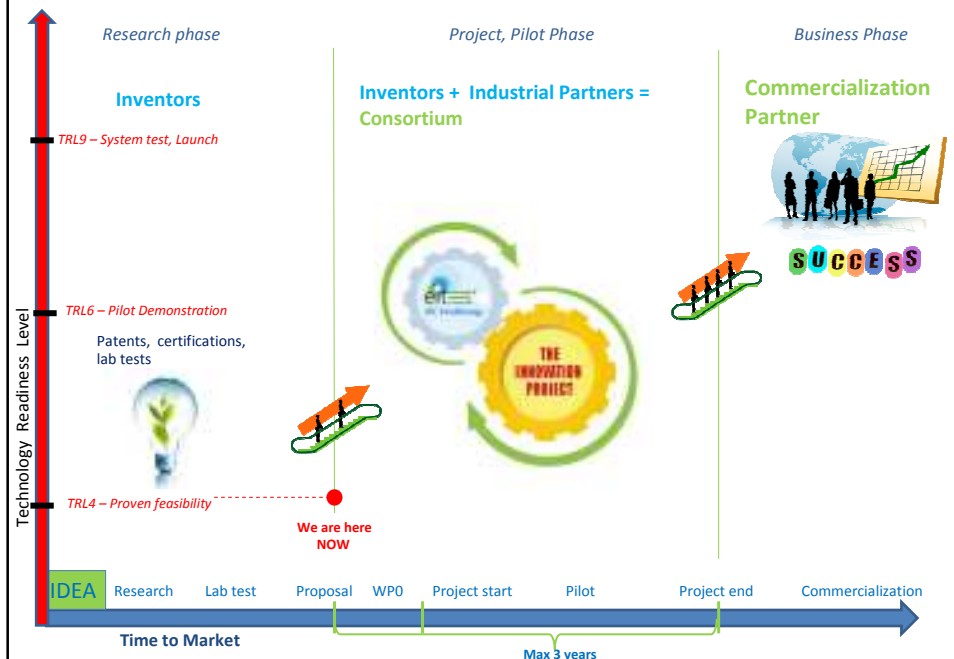
## OUR GOAL

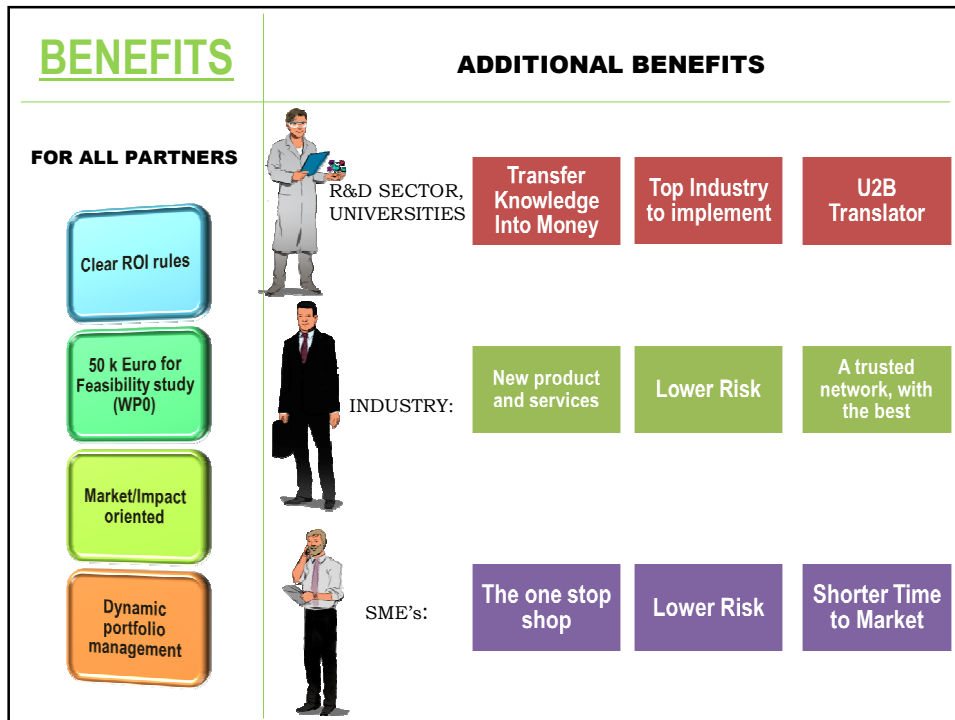
Support YOU to make a good business from your technology

Technology



## TECHNOLOGY TRANSFER CYCLE





**KIC InnoEnergy Innovation Projects**  
 Innovation project definition

**WHAT IS A KIC INNOENERGY INNOVATION PROJECT?**

*Transformation of available knowledge into new **marketable products and services** related to the field of sustainable energy that creates positive impact on market and society, by:*

- Decreasing energy cost
- Increasing security vis - à - vis resources holders
- Increasing intrinsic operational safety or reliability
- Reducing Green House Gas emissions

**Such projects should normally present:**

- Time to market <5 years from the beginning of a project
- Project duration of 3 years
- Technology Readiness Level (TRL) > 4

Copyright © 2013 KIC InnoEnergy 42



## Who can apply for a project ?

### EVERYONE WHO BRINGS VALUE!

- Any:
  - Formal partner
  - Associate partner
  - Project partner
  - or new partners
- Consortium can be complemented with new partners if needed
- If a project is approved, non KIC Partners must become partners
  - Associate
  - Network
  - NOT Formal (share holder)



Evaluation criteria		The weight
<b>Business development</b>	Identification of customer needs Market identified IP mapping viability	6
<b>Risk analysis</b>	Technical risk Identification of other risks	5
<b>Financial viability</b>	Budget viability Justification of requested investment	3
<b>Operational viability</b>	Soundness of project (plan, management,...) Soundness of consortium Vs value chain	4
<b>KIC objectives</b>	Integration of students Participation of SMEs	5



## Business Creation

## WHAT WE DO

1. Build the TEAM  
2. Nurture and support

A diagram illustrating the business creation process. On the left, four business professionals in suits are standing on a sandy ground, engaged in discussion. In the center, the eit Knowledge & Innovation Community KIC InnoEnergy logo is displayed. To the right, a green staircase with four steps leads up a cliffside. The steps are labeled from bottom to top: FEASIBILITY, PILOT SCALE, PRODUCT, and MARKET. At the top of the cliff, there is a globe, a stack of gold coins, and a line graph showing an upward trend.

## OUR GOAL

Support YOU to make a good business from your technology

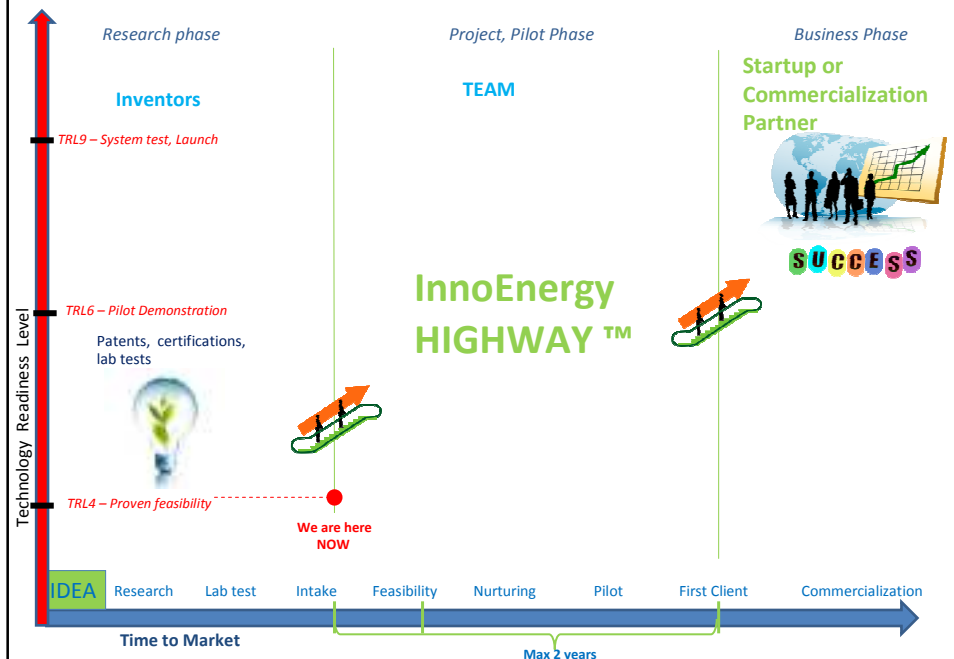
Technology



InnoEnergy  
HIGHWAY™



## TECHNOLOGY TRANSFER CYCLE





## Create your own business!



If analysis went successful, KIC InnoEnergy assigns a **Business Coach** to the entrepreneur and jointly decides the roadmap (subset of services of each dimension) that will bring the entrepreneur to become a businessman or woman. **KIC InnoEnergy Highway® is the one stop shop.**



# Dziękuję za uwagę

**Katarzyna Sobótka-Demianowska**  
Koordynator Wyzwania Energia  
katarzyna.sobotka@kpk.gov.pl

**Krajowy Punkt Kontaktowy**  
**Programów Badawczych UE**  
www.kpk.gov.pl

Research and  
Innovation